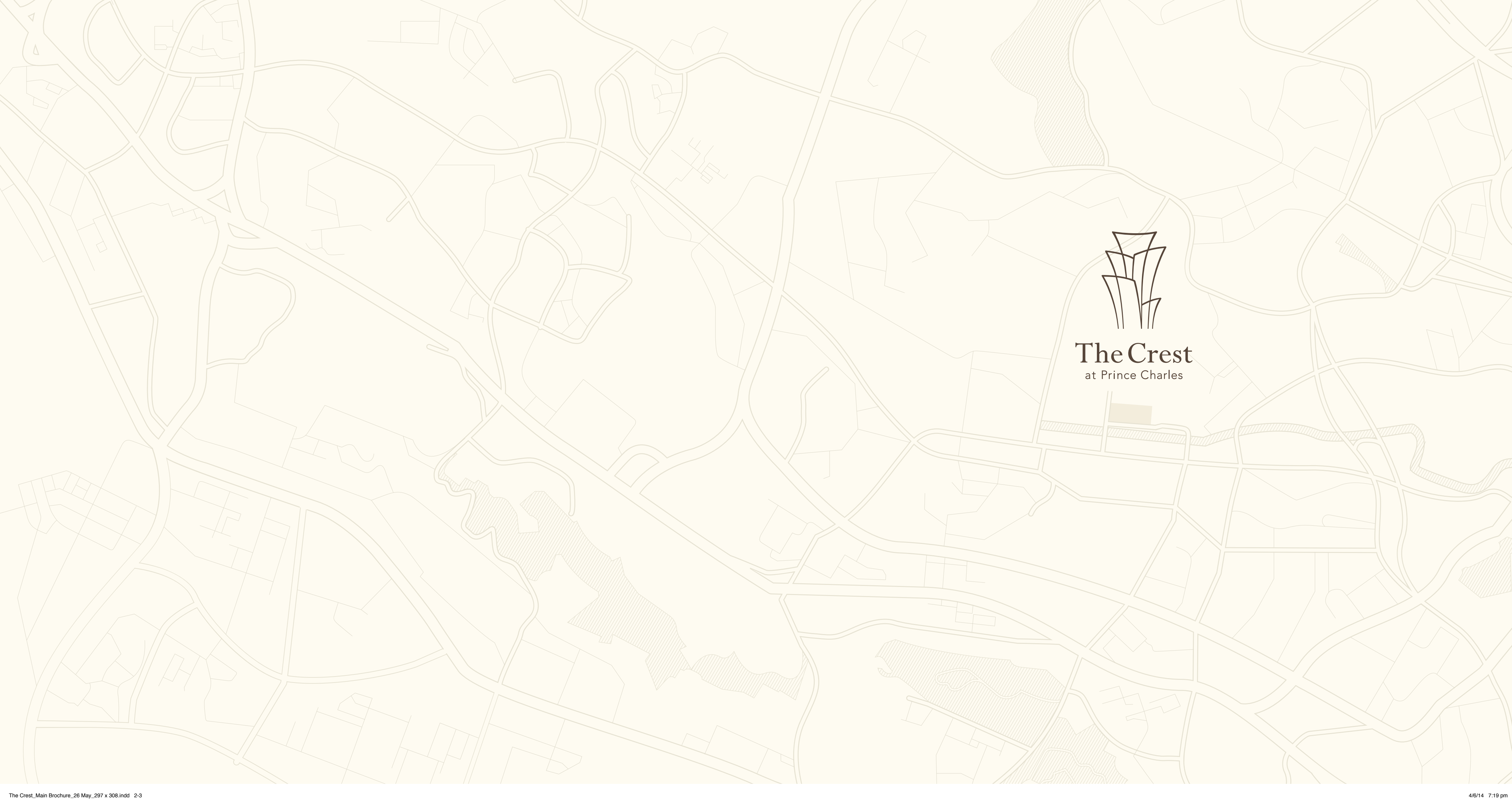
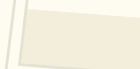


# The Crest

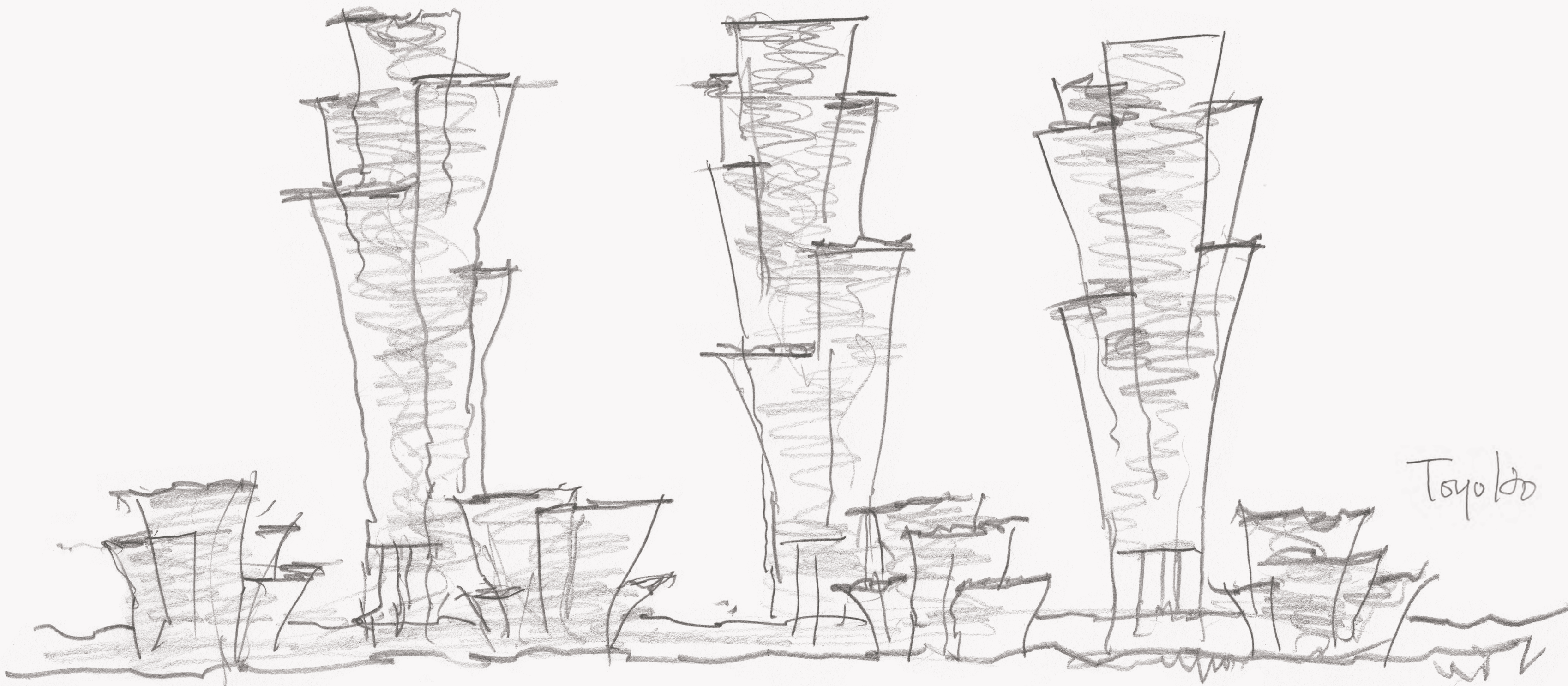
at Prince Charles



Life peaks at The Crest.







The true measure of a home's value extends beyond the square meters of its living space.

A well-built home may raise our standard of living. But to raise our quality of life, a good home needs to be mindful of its immediate surroundings.

Welcome to *The Crest*. Here, every element is designed with the next larger context in mind. Beginning with you and your loved ones, these distinguished homes afford generous space for everyone to live comfortably together.





Next, the living spaces gently meld with the landscape, in a fluid and organic fashion. This kinship speaks of architect Mr. Toyo Ito’s acute sensibility for the natural world. No doubt, a quality that has helped earn him the Pritzker Prize, arguably architecture’s highest accolade.

The lush, quiet surrounds then blend seamlessly with the tranquil enclave of Tanglin, home to numerous embassies and good-class bungalows. In spite of the neighbourhood’s poise and serenity, it offers multiple accesses that readily connect residents to the island’s various hubs, fuss-free.

Homes at *The Crest* boast a relationship between residents, residence, landscape, and neighbourhood that few could measure up to. There is a level of intimacy and harmony here, between us, our living space, the natural world, and our community.

Welcome to *The Crest*. A kindred bond kindled by a collection of carefully curated private residences in a truly private neighbourhood.





Pending

Designed with the next larger context in mind.  
Estate. Landscape. Living Space.



Tanglin neighbourhood

An open welcome beckons you to an estate reputed for its good class bungalows and low-density neighbourhood. Residents simply enjoy more green and breeze, a rare luxury truly treasured in urban Singapore.

Explore the many routes to get home

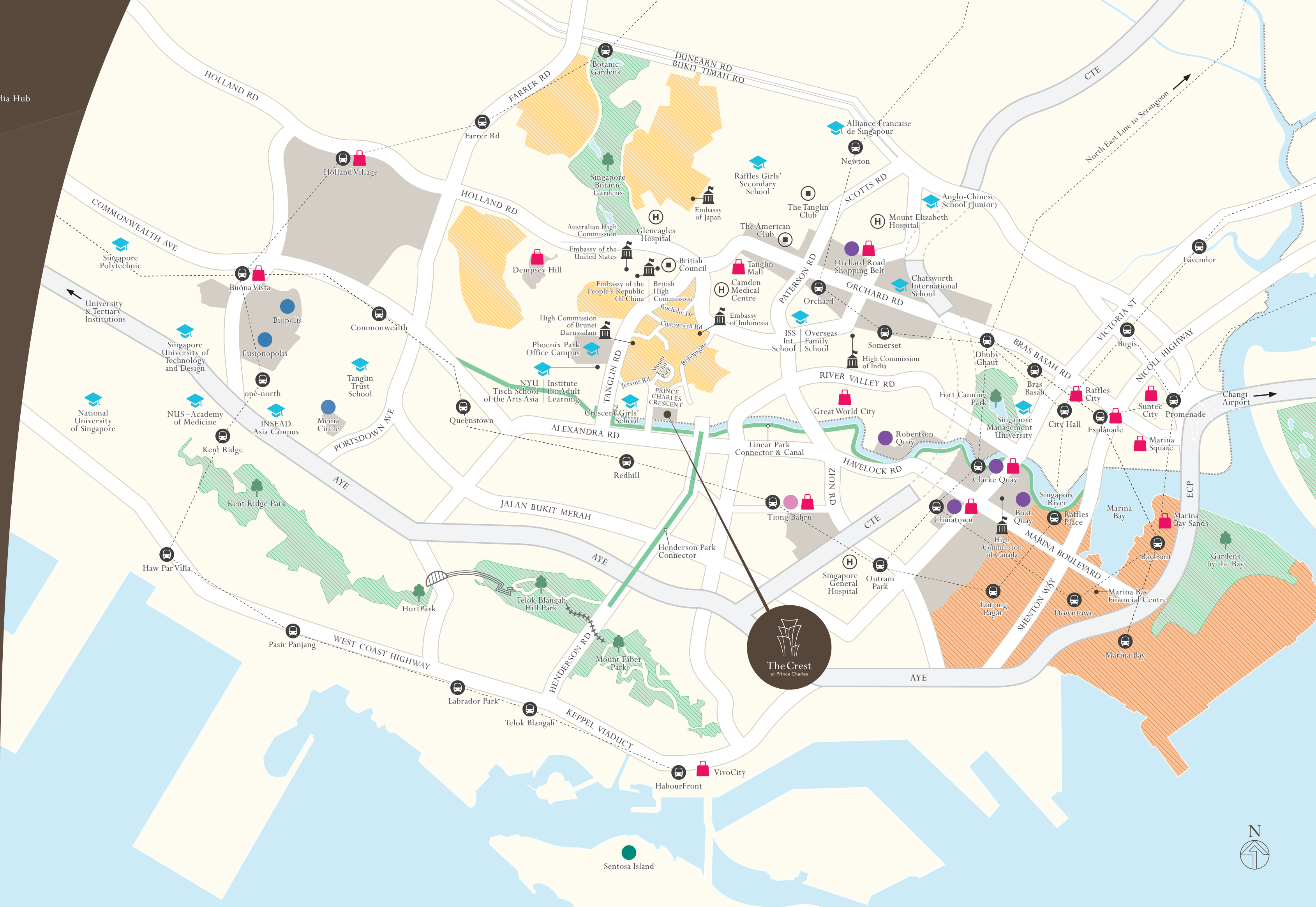
Multiple roads, namely Tanglin Road, Rochalie Drive, Jervois Road, Chatsworth Road, Bishopsgate Road, Nathan Road, Grange Road and River Valley Road lead to *The Crest*, making it ever more accessible and convenient to get home. To top it off, many of these spacious roads are beautifully lined with arching trees, making your drive to and from *The Crest* smooth and pleasurable.



In the Heart of Hubs, a Truly Private Estate

The Crest is nestled in a truly private estate, right in the heart of four exciting corridors. Head north to the shopping haven of Orchard Road or south to the great outdoors at the waterfront and the Southern Ridges. In the east is the CBD while biomedical, infocomm and media hubs lie in the west along with renowned educational institutions.

- Biomedical Sciences and Media Hub
- Entertainment Hub
- Creative Community
- Recreation Hub
- Central Business District
- Good Class Bungalows
- Shopping and F&B
- Education
- Park Connector
- Parks and Greenery
- Embassy
- MRT Station
- Medical Centre
- Club







Southern Ridges



Marina Bay

**Seamless Connections to Nature and Urban Centres**

At your doorstep, the Alexandra Linear Park Connector and Canal leading to the Singapore River takes you all the way to Boat Quay, past River Valley, Robertson Quay, and Clarke Quay; while the adjacent Henderson Park Connector links you to the Southern Ridges, a 10km nature trail that joins Mount Faber Park, Telok Blangah Hill Park, HortPark, Kent Ridge Park and Labrador Nature Reserve. These seamless nature and urban arteries mean that you'll never run out of activities to do, whether it's a languid after-dinner stroll or an exciting round-island weekend cycling expedition.



\*Source: [www.onemap.sg](http://www.onemap.sg)  
<http://www.nparks.gov.sg/cms/>





Designed with the next larger context in mind.  
Estate. Landscape. Living Space.

Artist's impression, for illustration only.



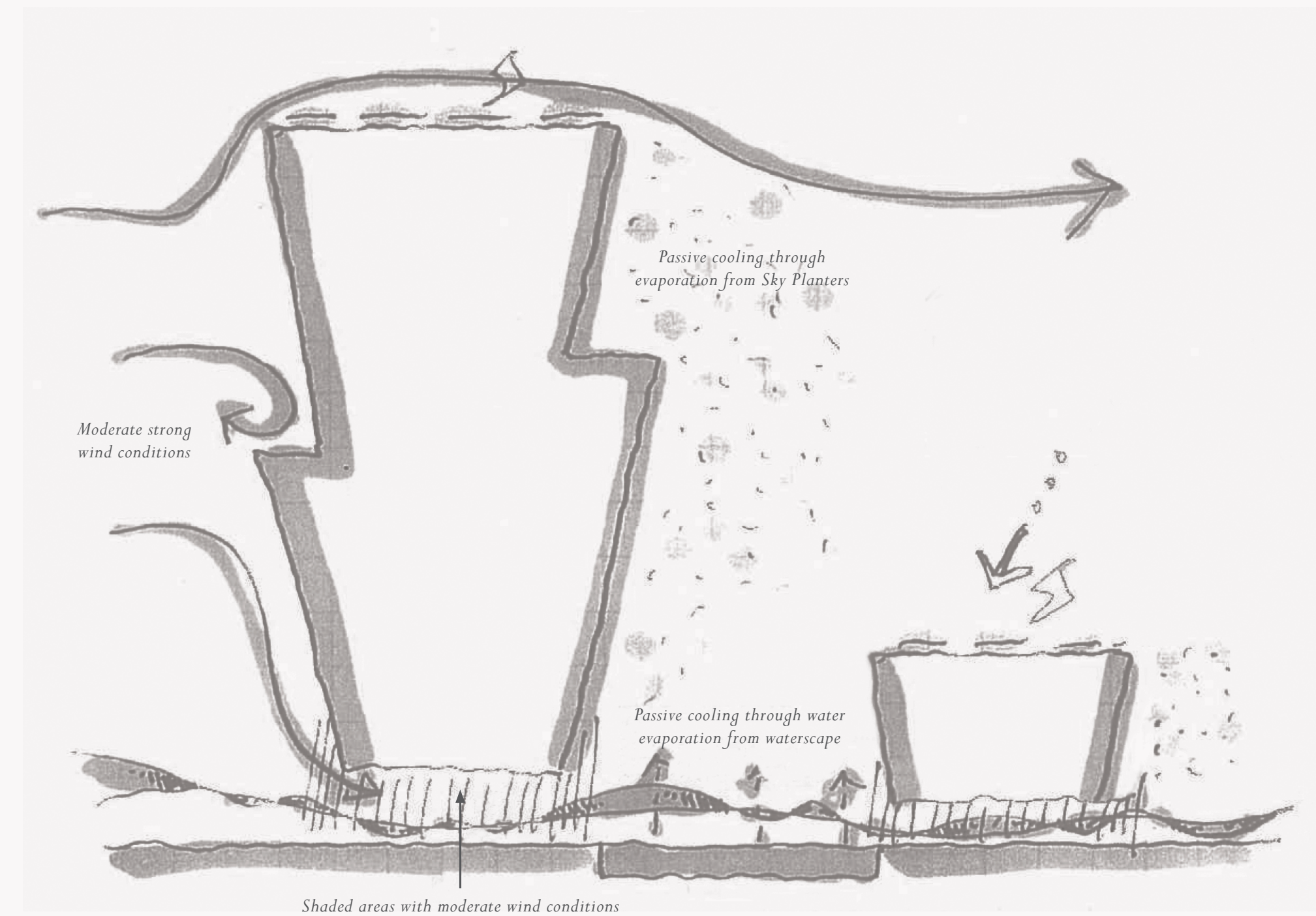


### Inspired by Nature

In the natural environment, Nature has its own way of keeping cool. While sunlight promotes photosynthesis, evaporation through the leaves of trees has a passive cooling effect that keeps the environment cool. The leaves also help to moderate wind conditions and provide shade. This is a strategy that works in nature and has also inspired the design of *The Crest*.

### Designed For Comfort

Designed by Pritzker Prize laureate Toyo Ito, *The Crest* has been created to provide a bright and airy living environment with magnificent views. Sky planters that are part of the architecture promote passive cooling and complement the lush landscaping and water features.







50m Lap Pool by the Clubhouse  
Artist's impression, for illustration only.

### Water Meets Land

The landscape of *The Crest* is designed to give you an intimate and unique experience of nature. A remarkable waterscape with swimming pools that span the development, the central lagoon is an open expansive oasis of beauty, harmony and serenity. Here you can swim amidst nature and wonder at the beauty of the surroundings.



Children's Pavilion & Play Mound  
Artist's impression, for illustration only.



Onsen Spa  
Artist's impression, for illustration only.

### Human. Nature.

The needs of growing families are catered to with thoughtfully planned recreational areas for all. Children can play in a lush tropical setting designed to engage and inspire. Pavilions set within this landscape also allow you to get closer to nature in the comfort of a shady refuge.





**Alfresco Dining by the Water**

Dine by the water at the Grill and Dine terrace. Set amidst groves of Willow trees and blazing Yellow Flame of the Forest the intimate enclave is also a perfect vantage point from which to watch the world go by.

Grill and Dine Terrace by the meadow21

Artist's impression, for illustration only.



Pending

Oasis Pavilion  
Artist's impression, for illustration only

**Integrated Landscaping Creates Layers of Green**

Exemplifying the best of tropical living, landscaping elements in the form of communal planters are integrated with the development's façade to extend the landscaped grounds vertically. The sublime selection of greenery also enhances the subtle layering of foliage so that architecture and nature become one.

Nestled within this are quiet retreats like the Oasis Pavilion, the perfect spot for quiet reflection. Venture further and you will find the Garden Jacuzzi that will transport you quickly into a realm of total relaxation.



**Living the High Life at  
The Crest Club at Level 23**

A canopy of stars lights up the languid nights at the Crest Club where tempting morsels adorn the canapes bar and Teppanyaki grill. Make a night of it and create a roof top experience for your guests, taking full advantage of the specially designed lounge and bar areas or screen them your favourite movies in the adjoining entertainment cum theatrette suite, fitted out with plush, reclining seating.

In the day, the Sky Gym at the Crest Club is destination for fitness enthusiasts. Replete with high-tech gym equipment, all you need to give your body a good workout is provided here together with a view that will take your breath away.

Canapés Terrace Bar and Teppanyaki Grill  
Artist's impression, for illustration only







Designed with the next larger context in mind.  
Estate. Landscape. Living Space.

Artist's impression. For illustration only.



Designed to meet individual preferences, *The Crest* is divided into Island Villas and Towers by the Meadow. The Island Villas, consisting of four blocks no more than five storeys high, afford the luxury to be close to nature. Here, living spaces boast generous nature, air, and volume. An extension of the estate's very qualities, naturally.

The generosity of air and space also extends to the Towers by the Meadow where the boundary of your home is as infinite as the sky itself.



Island Villas Private Enclosed Space  
Artist's impression, for illustration only.



With three blocks soaring 23 storeys, a host of expansive and distant views of the city and island await the lucky few aspiring to new heights.

Distant View  
Artist's impression, for illustration only.





**The Exterior**

The architecture’s silhouette, inspired by a bud in bloom, is reminiscent of a growing life. Each ‘petal’ is gently and thoughtfully curved to capture nature’s elements such as light and wind from multiple directions.

**The Interior**

The key to living together in harmony is space. *The Crest’s* generous living spaces provide for a quality of life that is unparalleled. Trusted fittings and finishings top off the overall living experience.



The Mezzanine Collection with Hobby Loft

**The Bespoke Collections**

*The Crest* also comes with two rare and sought-after collections of specially designed units – The Mezzanine Collection with Hobby Loft, and The Dual-Key Collection with Guest Suite.

While drawing you in, the double volume space afforded by The Mezzanine Collection generously welcomes air and light into the home, giving a heightened sense of arrival. Once inside, the mezzanine, with its XX-metre high ceiling, offers an inspired, cavernous loft for enthusiasts and hobbyists to showcase their collection.

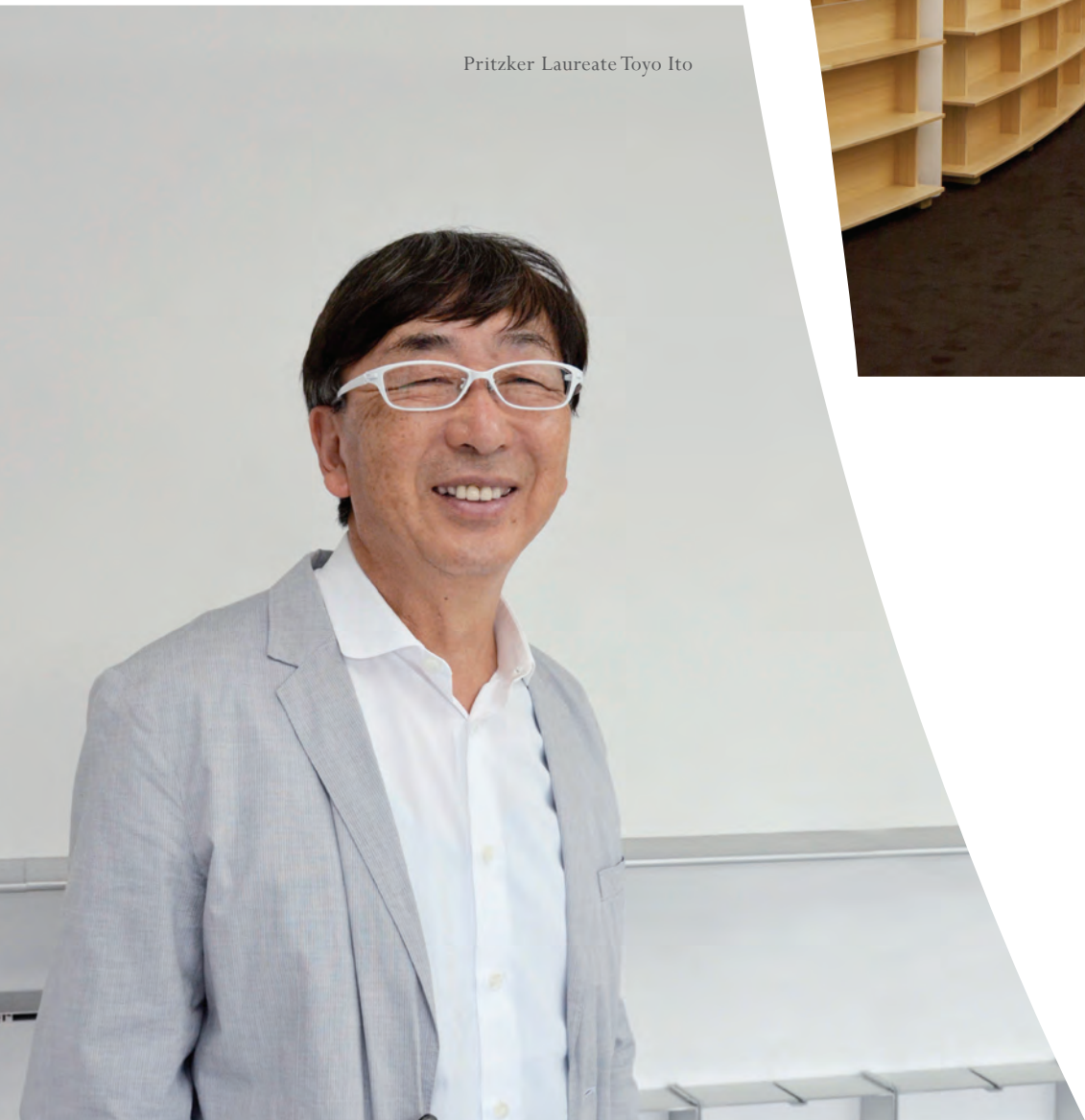
Offering incomparable privacy and versatility, The Dual-Key Collection comes with a luxuriously sized guest suite, complete with its very own private entrance, en-suite bathroom and kitchenette. This double dwelling set-up is ideally suited to multi-generational living, as well as provide the potential to increase the return on your investment.



National Taiwan University, College of Social Sciences (2013)  
Photo credit: Kai Nakamura



Pritzker Laureate Toyo Ito



### About Toyo Ito, the master architect

Toyo Ito is one of the most influential architects in practice today. In his career, Toyo Ito has developed an illustrious body of work that combines conceptual innovation with keen sensitivity to the landscape, creating exceptional architecture. His remarkable style has won him many global awards including the *Brunner Memorial Prize* (2000), *RIBA Royal Gold Medal* (2006), *Frederick Kiesler Prize* (2008), *Praemium Imperiale* (2010), the *Pritzker Prize for Architecture* (2013) and the *Thomas Jefferson Foundation Medal in Architecture* (2014). Admired for his presentation of architecture and nature using surprising geometries, Toyo Ito is also dedicated to the process of discovery and delight, as seen in the *Sendai Mediatheque*, *National Taiwan University College of Social Sciences*, *Tama Art University Library*, inter alia.

Toyo Ito Museum of Architecture, Imabari (2011)  
Photo credit: Daici Ano



Belle Vue Residences in Singapore, by Wing Tai

# Pending



The condominium development *BelleVue Residences* (2010) in Singapore was his first condominium development. This international debut is now being followed by *The Crest at Prince Charles* (Singapore) - designed in 2013 when he won the prestigious Pritzker. Bearing his signature, *The Crest* represents an appreciation for timeless design, an intimacy of architecture and nature, and a celebration of life's many peaks.





Artist's impression, for illustration only



For enquiries, please call Wing Tai Property Management Pte Ltd

Showsuite: **(65) 6333 3800**  
Sales Hotline: **(65) 6380 3800**

[www.thecrest.com.sg](http://www.thecrest.com.sg)

Joint Developers

